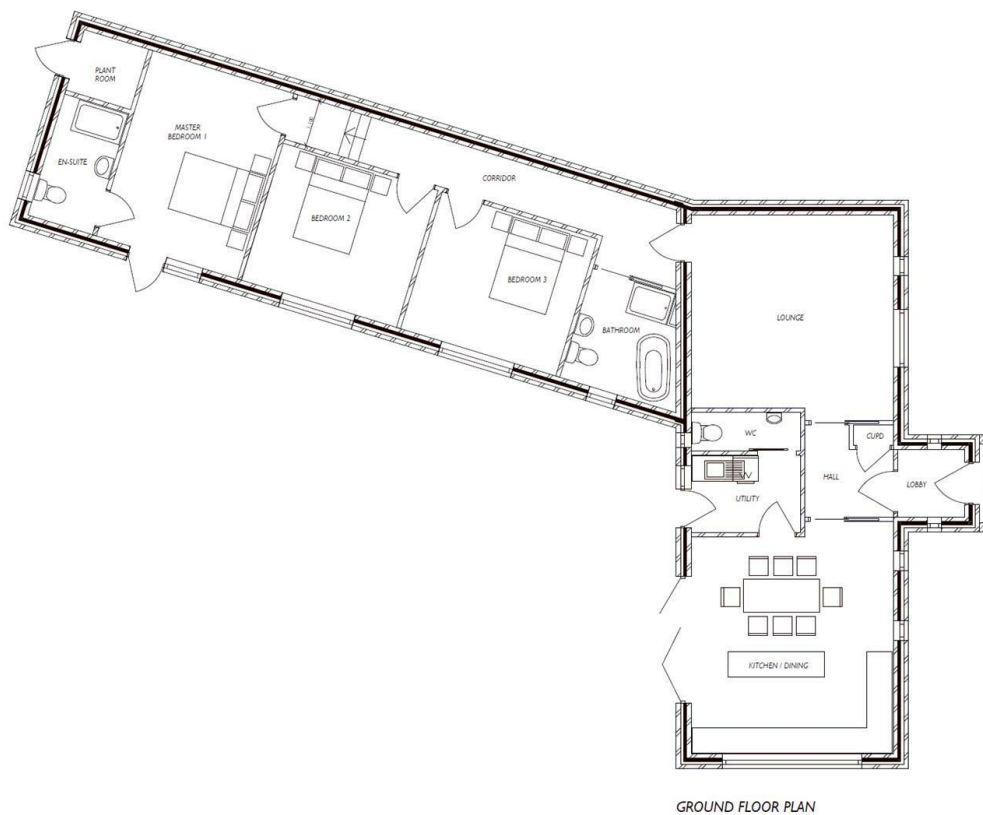




2 The Bryn, Sketty, SA2 8DD

£250,000

- Extremely Rare Opportunity
- Eventual Bungalow
- Close to Schools
- www.swansea.gov.uk app no. 2024/1198/S73
- Self-build Plot
- Contemporary Design
- Stone's throw to Mumbles Road and Bay
- Detailed Planning consent
- Close to Singleton Hospital
- Prime Location



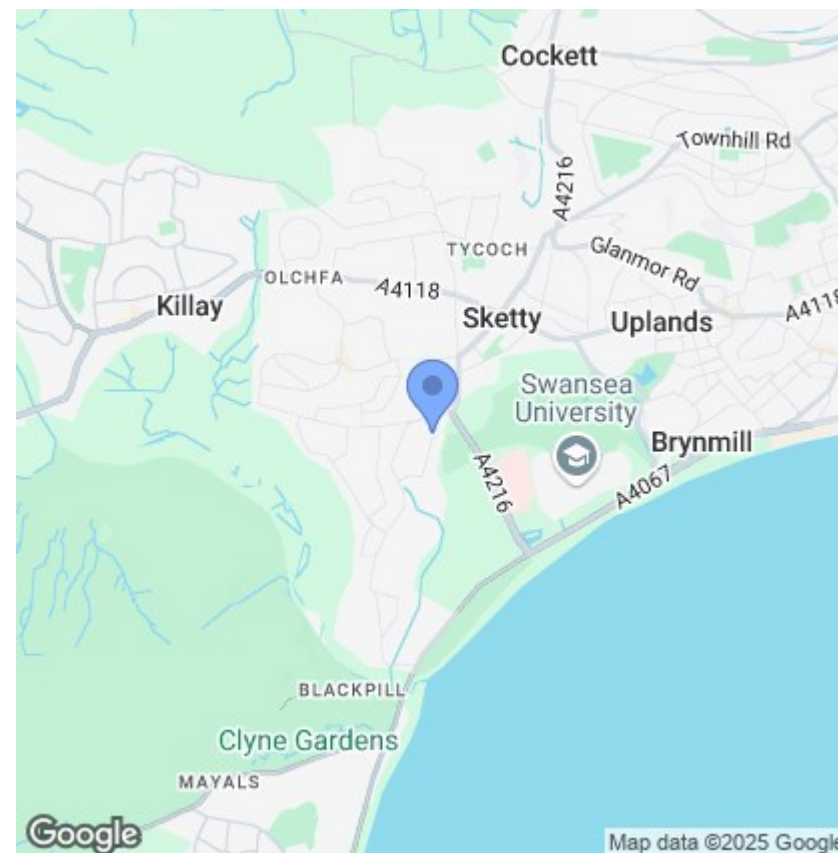
Description

An extremely rare opportunity to purchase a self-build plot with detailed consent in this sought-after, residential location, close to Singleton Hospital, local schools and a stone's-throw from The Mumbles Road, promenade and bay. The popular village of Mumbles is close-by.

The eventual property is of contemporary, single level design with off-road parking and will enjoy a secluded spot, 'away from it all'.

Planning consent has been granted by Swansea City Council with the documents accessible on-line by visiting www.swansea.gov.uk/planning. Ref 2024/1198/S73

Please note, three trees on-site are subject to TPOs and have been considered during the planning process and allowed for.



Directions

Postcode for satnav ; SA2 8DD

Viewings

Viewings by arrangement only.

Call 01792 653 100 to make an appointment.